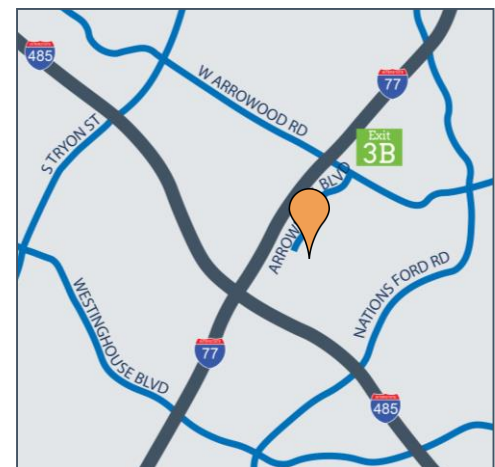
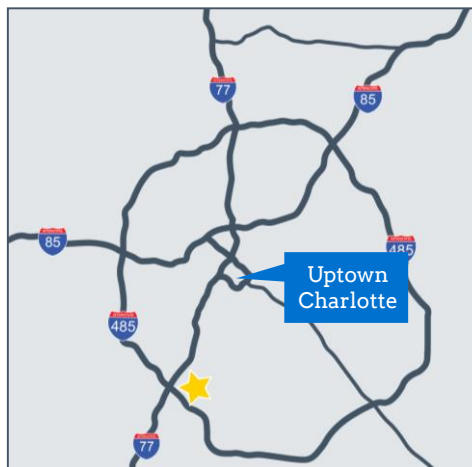




Property Features

- < 19,200 SF
- < 16' clear height
- < Rear loading dock location
- < Zoned I-1
- < Located just inside the I-485 loop, off I-77



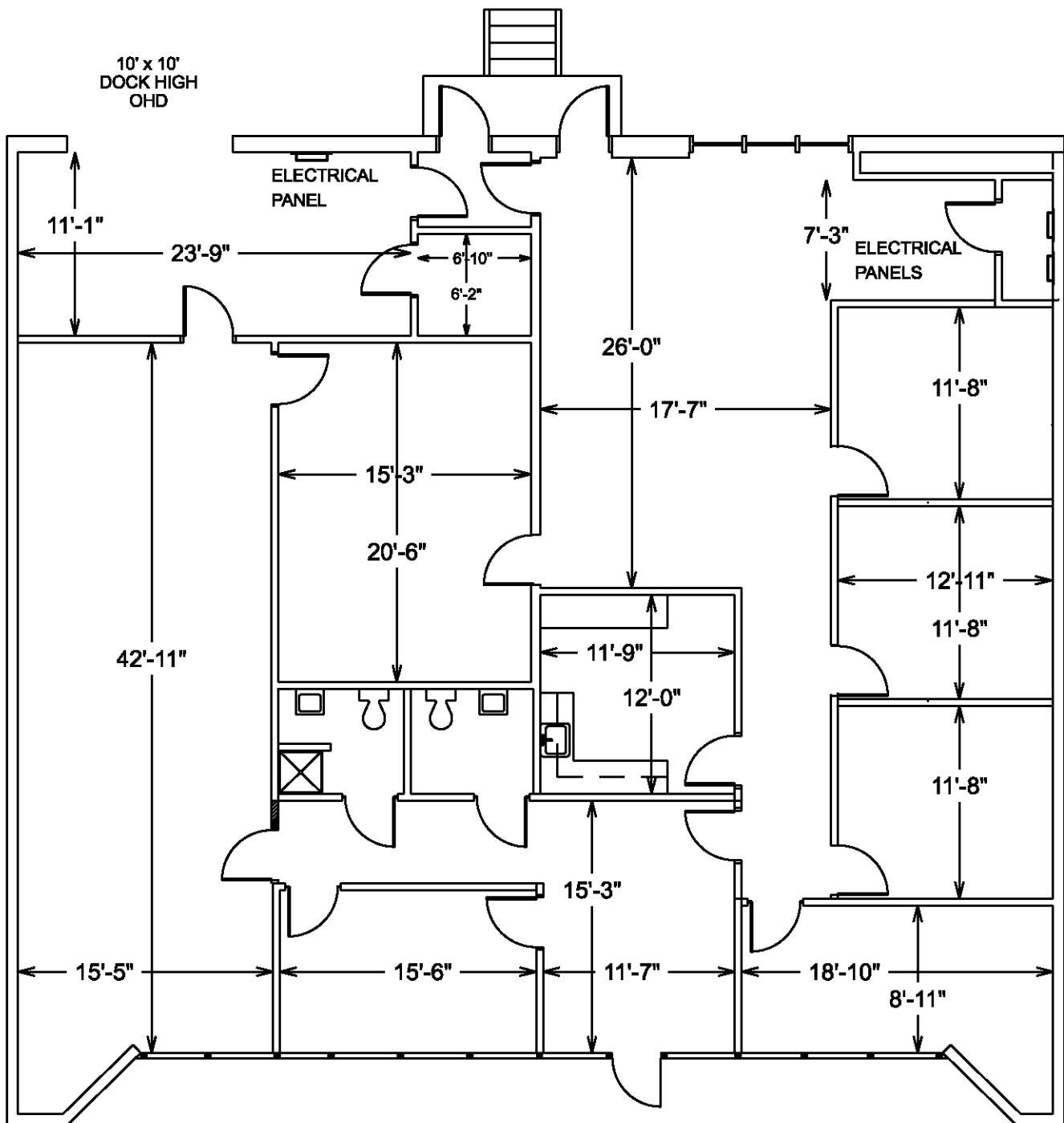
AVAILABILITY

Suite P 3,840 SF Total / 2,778 SF Office

Suite S 3,840 SF Total / 2,597 SF Office

8349-P Arrowridge Boulevard

Floor Plan



Space Details

- ◀ 3,840 SF total
- ◀ One (1) 10' x 10' loading door
- ◀ 2,778 SF of office space