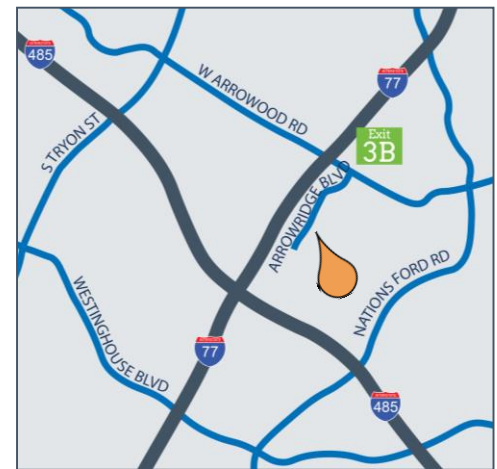
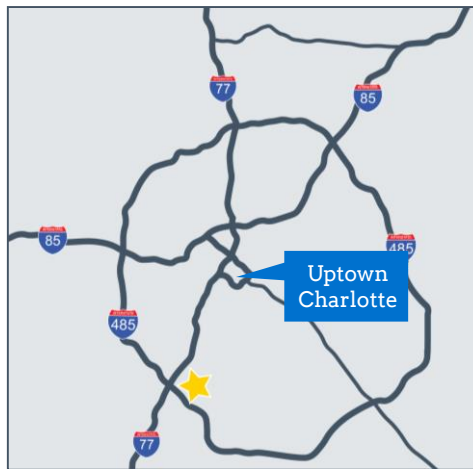




**Property Features**

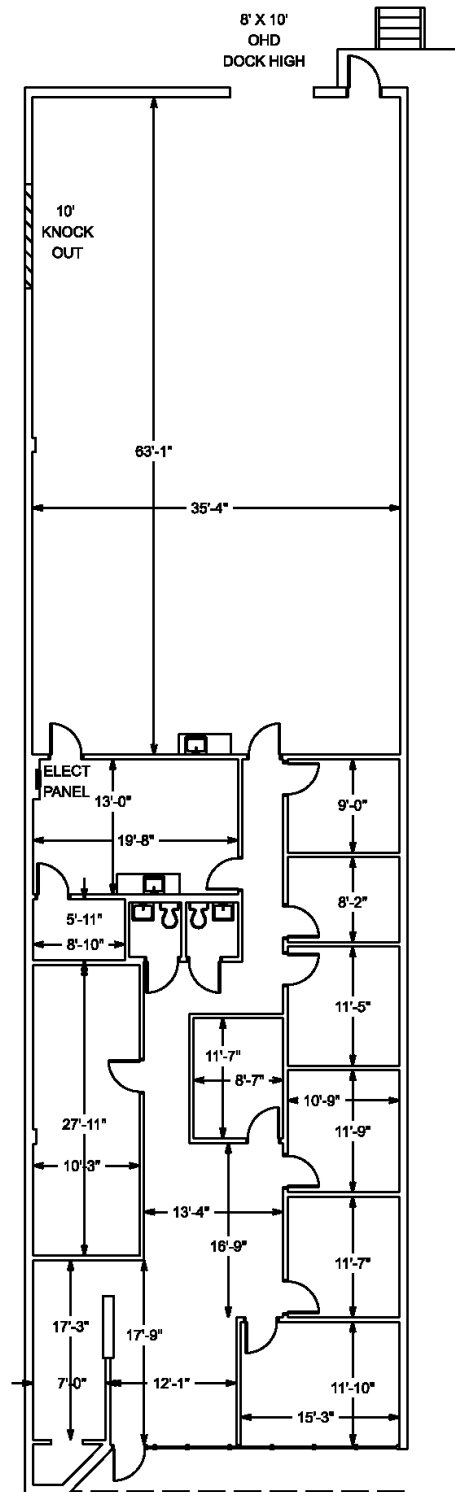
- < 48,662 SF
- < 16' clear height
- < Rear loading dock location
- < Zoned I-1
- < Located just inside the I-485 loop, off I-77



AVAILABILITY	
Suite E	12,000 SF Total
Suite G	4,860 SF Total / 2,556 SF Office

# 8301-G Arrowridge Boulevard

## Floor Plan



### Space Details

- ◀ 4,860 SF total
- ◀ 2,556 SF of office space
- ◀ One (1) 8' x 10' loading door