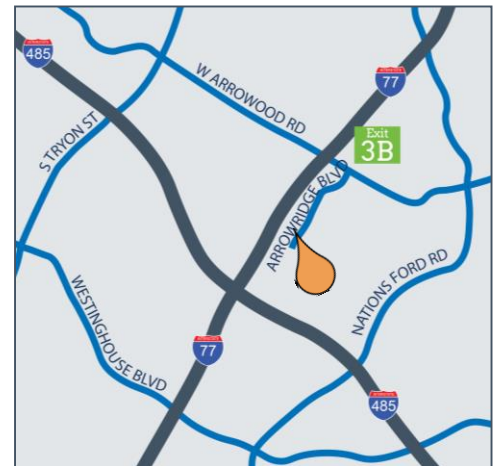
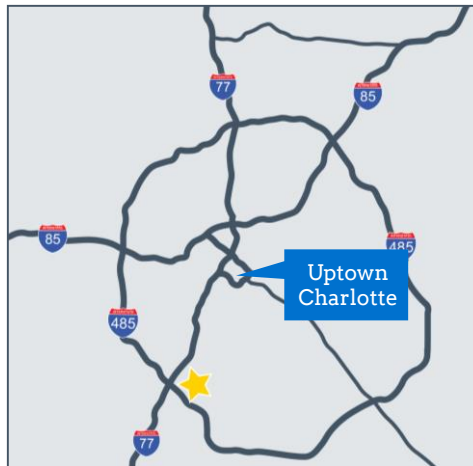




Property Features

- ◀ 60,654 SF
- ◀ 16' clear height
- ◀ Wet sprinkler
- ◀ Rear loading dock location
- ◀ Zoned I-1
- ◀ Located just inside the I-485 loop, off I-77

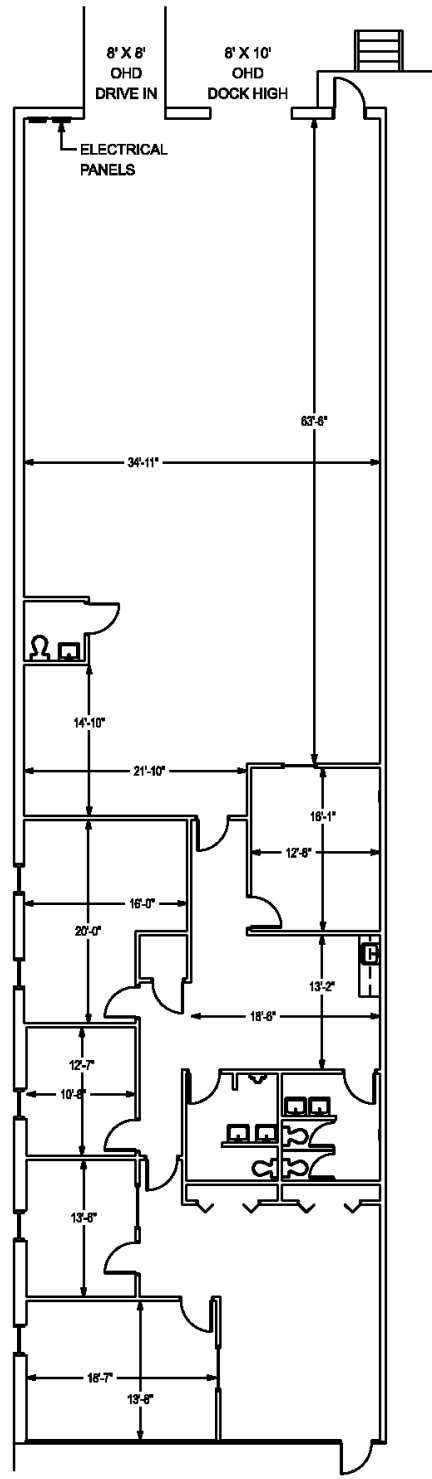


AVAILABILITY

Suite A 4,860 SF Total / 2,447 SF Office

8334-A Arrowridge Boulevard

Floor Plan



Space Details

- ◀ 4,860 SF
- ◀ 2,447 SF of office space
- ◀ One (1) 8' x 10' loading door
- ◀ One (1) 8'-wide x 10'-high drive-in door