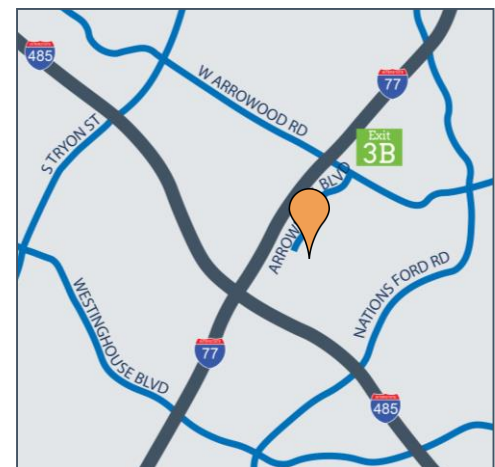
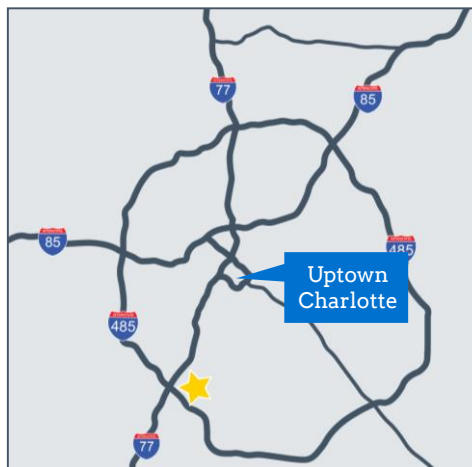




Property Features

- ◀ 19,200 SF
- ◀ 16' clear height
- ◀ Rear loading dock location
- ◀ Zoned I-1
- ◀ Located just inside the I-485 loop, off I-77

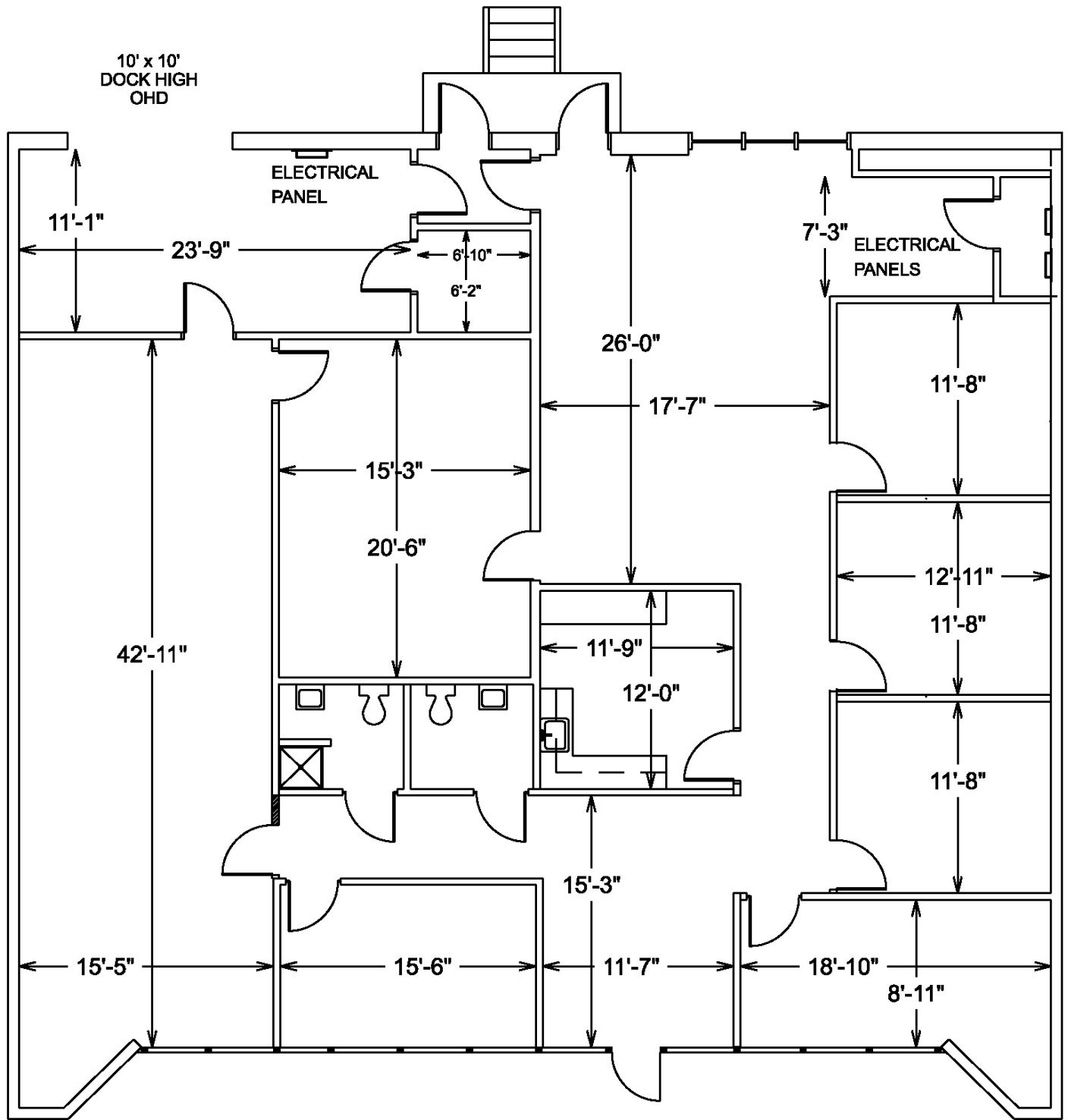


AVAILABILITY

Suite P 3,840 SF Total / 2,778 SF Office

8349-P Arrowridge Boulevard

Floor Plan



Space Details

- ◀ 3,840 SF total
- ◀ One (1) 10' x 10' loading door
- ◀ 2,778 SF of office space