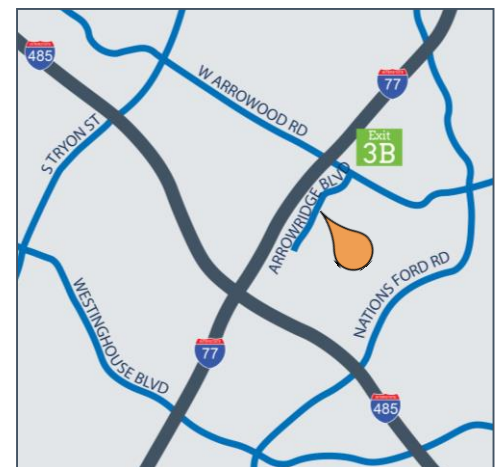
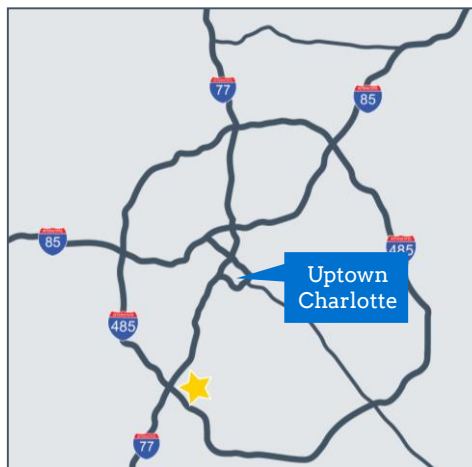




Property Features

- ◀ 37,675 SF
- ◀ 16' clear height
- ◀ Wet sprinkler
- ◀ Rear loading dock location
- ◀ Zoned I-1
- ◀ Located just inside the I-485 loop, off I-77

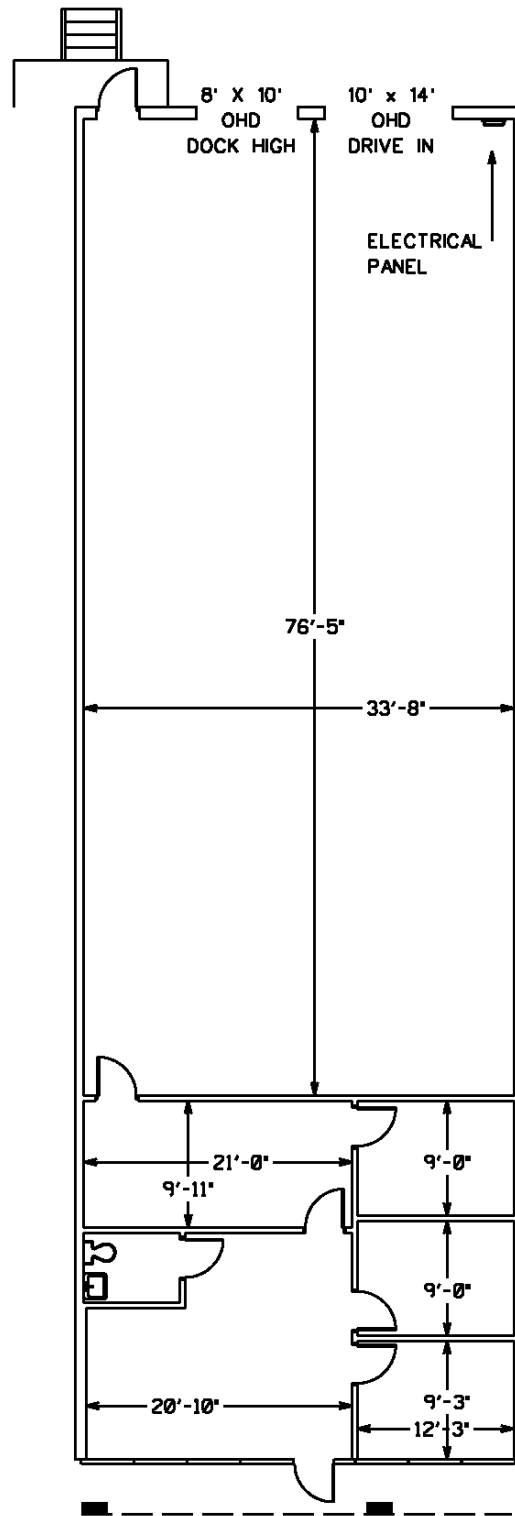


AVAILABILITY

Suite F 3,771 SF Total / 1,127 SF Office

8100-F Arrowridge Boulevard

Floor Plan



Space Details

- ◀ 3,771 SF total
- ◀ 1,127 SF of office space
- ◀ One (1) 8' x 10' loading door
- ◀ One (1) 10' x 14' drive-in door